

Stellenbosch Univ. Rural Medical Education Partnership Initiative

Jean B. Nachega, MD, MPH, PhD
Department of Medicine &
Centre for Infectious Diseases



Fakulteit Gesondheidswetenskappe

Faculty of Health Sciences





Fakulteit Gesondheidswetenskappe

Faculty of Health Sciences







2012 Vision Statement

Stellenbosch University

- is an academic institution of excellence and a respected knowledge partner
- contributes towards building the scientific, technological, and intellectual capacity of Africa
- is an active role-player in the development of the South African society
- has a campus culture that welcomes a diversity of people and ideas

Stellenbosch Faculty of HS



Fakulteit Gesondheidswetenskappe

•
Faculty of Health Sciences



FHS (SU) History

Inception 1956; drastic curriculum reforms past 15 years ; strategic initiatives are aimed at maintaining and enhancing Faculty levels of excellence with a teaching and training model that is **community oriented** and focused on

- Primary Health Care
- Interdisciplinary Learning
- Teaching and Rural Training



Demographics – SU FHS

- 3600 students (50:50 under- and postgraduate)
- 5 undergraduate programmes – Medicine, Physiotherapy, Occupational Therapy, Dietetics, Speech, Language and Hearing
- >80 postgraduate programmes – 32 medical specialties (MMed); about 500 postgraduate Nursing students
- Research Masters and Doctoral programmes
- Graduate about 15 Doctorates per year
- Faculty – SU:116; joint staff (partner employers) 350



Fakulteit Gesondheidswetenskappe

Faculty of Health Sciences



Education and Training

- New Revised Curriculum
 - Interdisciplinary Foundation Phase
- Diversity-promoting Initiatives
 - Gesog!, Selected Students
- Student Support
 - Tutor/Mentorship programme
- Centre for Rural Health and Development
 - Ukwanda – training / service to the community
 - Rural Clinical School



Fakulteit Gesondheidswetenskappe

•
Faculty of Health Sciences

Contribution to national health and education development

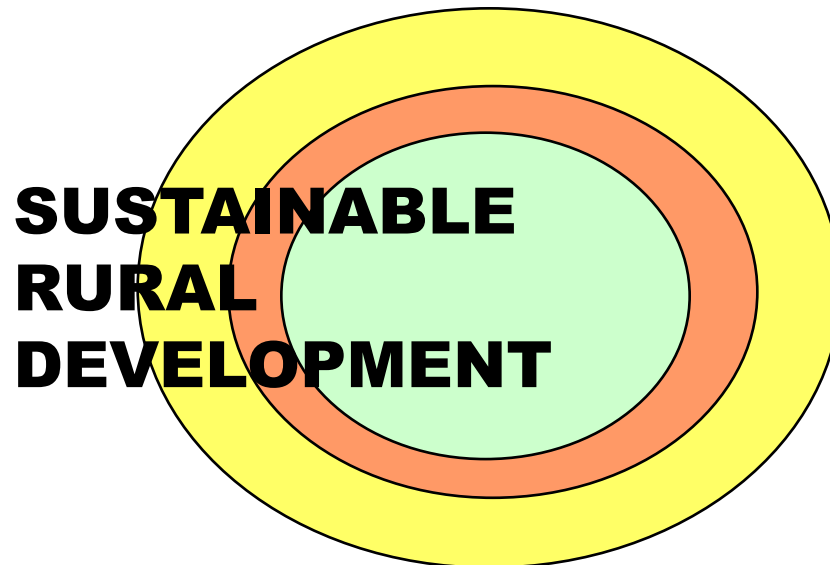
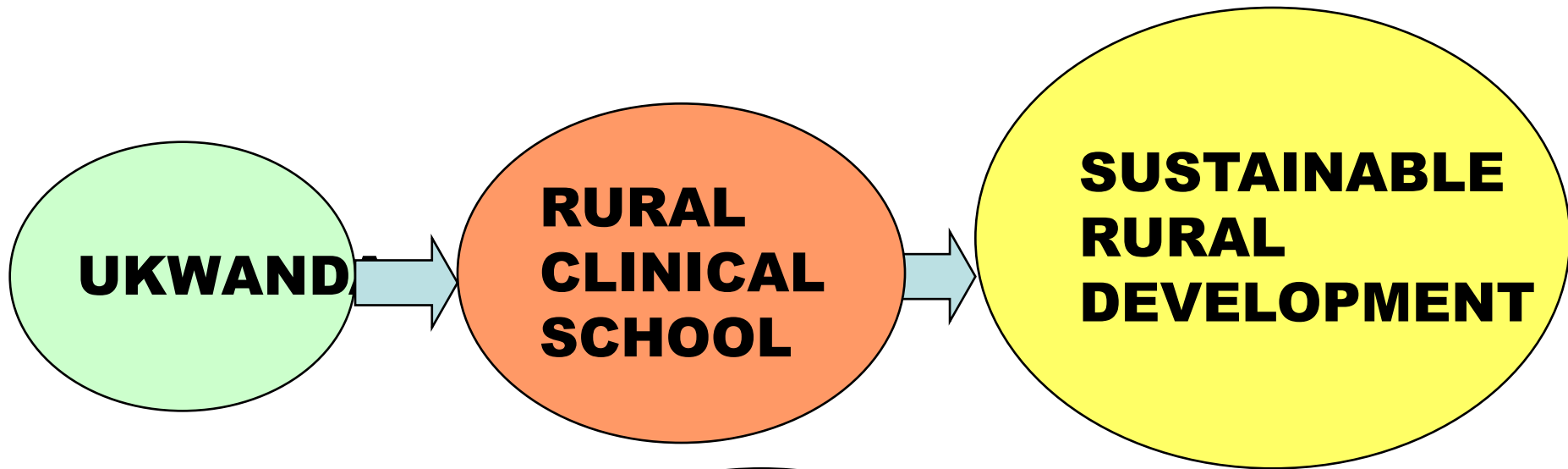
- Strengthening the health system through relevant education of care providers, especially in field of HIV/AIDS and other burden of diseases
- Public health focus to strengthen PHC and public sector health services
- Community partnerships
- Ukwanda Rural Clinical School – recruitment and retention for rural and underserved areas
- Evidence-based health care – drive policy development



Fakulteit Gesondheidswetenskappe

Faculty of Health Sciences





Fakulteit Gesondheidswetenskappe

Faculty of Health Sciences

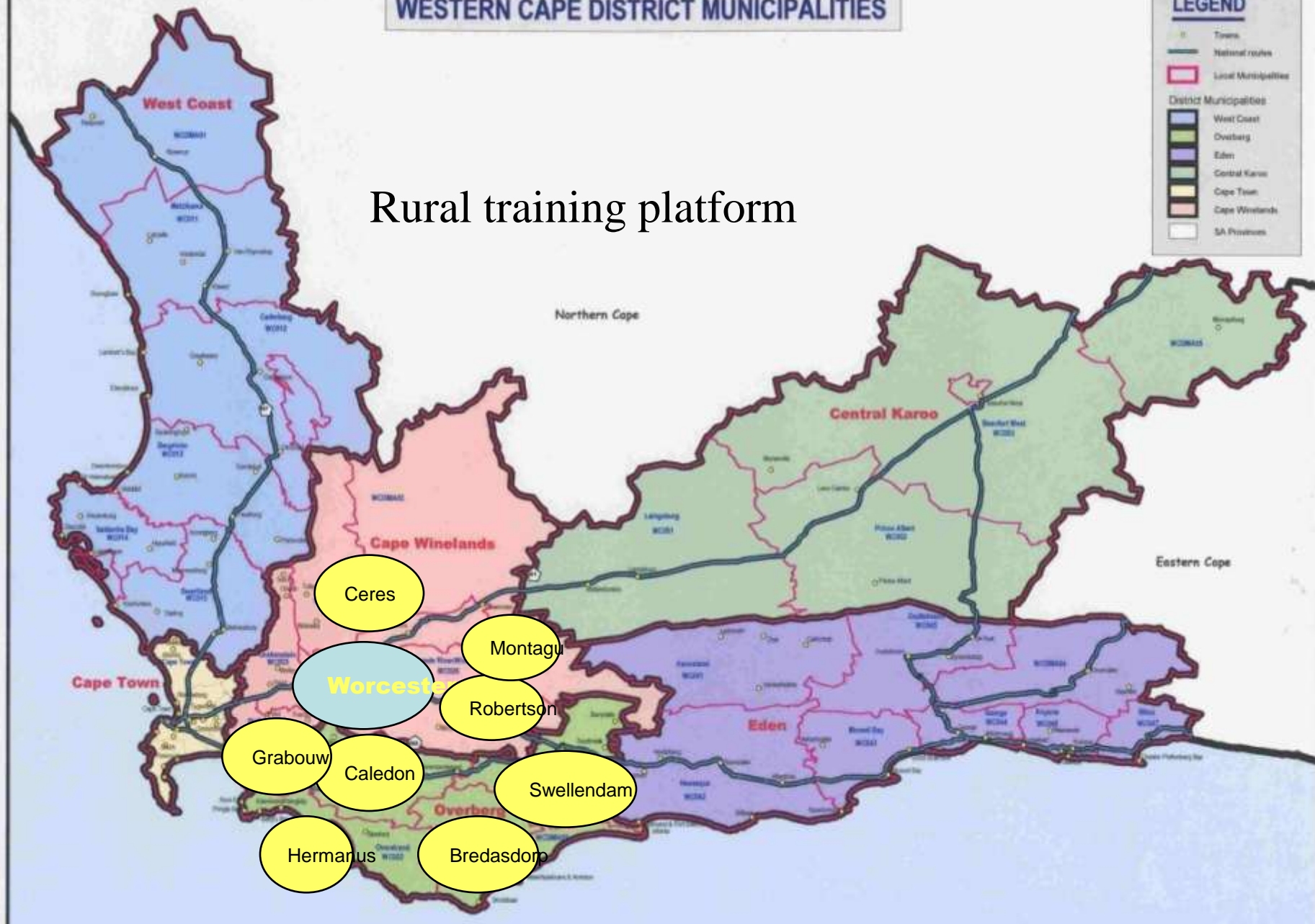


WESTERN CAPE DISTRICT MUNICIPALITIES

LEGEND

- Towns
- National routes
- Local Municipalities
- District Municipalities
 - West Coast
 - Overberg
 - Eden
 - Central Karoo
 - Cape Town
 - Cape Winelands
 - SA Provinces

Rural training platform



www.thehopeproject.co.za

Home

thehopeproject.co.za/hope/Pages/default.aspx

UNIVERSITEIT-STELLENBOSCH-UNIVERSITY

HOPE PROJECT

English Afrikaans

SEARCH

UNIVERSIT
STELLENB
UNIVERSI

HOME ABOUT INITIATIVES GET INVOLVED EVENTS NEWS FEED CONTACT

UNIVERSITEIT-STELLENBOSCH-UNIVERSITY

HOPE PROJECT

ERADICATING POVERTY AND RELATED CONDITIONS

PROMOTING HUMAN DIGNITY AND HEALTH

PROMOTING DEMOCRACY AND HUMAN RIGHTS

PROMOTING PEACE AND SECURITY

PROMOTING A SUSTAINABLE ENVIRONMENT AND A COMPETITIVE INDUSTRY

VIEW INITIATIVES

VIEW INITIATIVES

VIEW INITIATIVES

VIEW INITIATIVES

VIEW INITIATIVES

Follow us on Twitter

Join our Facebook group

View our Flickr images

Watch our YouTube videos

Terms & Conditions | © 2010 Stellenbosch University

UNIVERSITEIT-STELLENBOSCH-UNIVERSITY

HOPE PROJECT

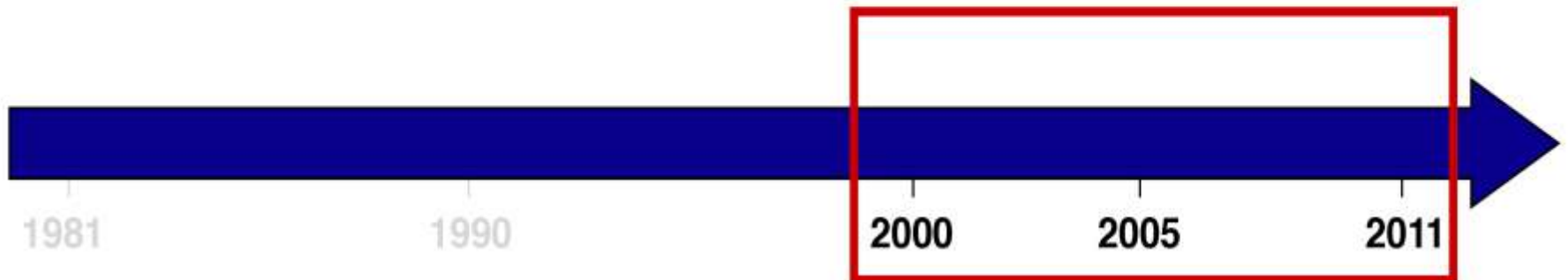


UNIVERSITEIT
STELLENBOSCH
UNIVERSITY

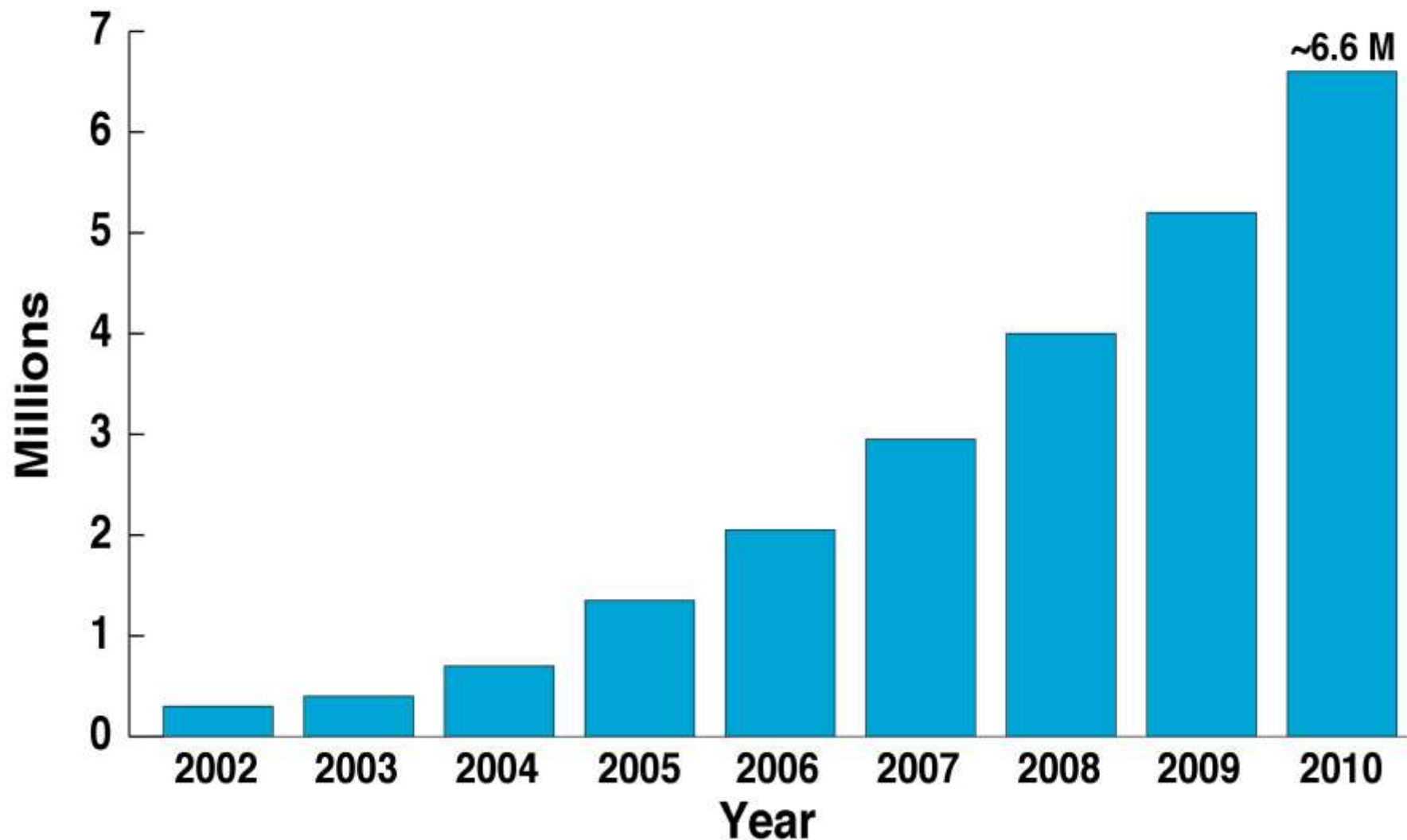
30 Years of HIV/AIDS

Global Programs for HIV Prevention, Treatment and Care

- PEPFAR
- Global Fund
- MSF
- Philanthropies (e.g. BMGF, Clinton Foundation, etc.)



Number of People Receiving Antiretrovirals in Low- and Middle-Income Countries



Source: UNAIDS, 2011



Life Expectancy of Recently Diagnosed Asymptomatic HIV-infected Patients Approaches that of Uninfected Individuals

A. van Sighem et al. on behalf of the ATHENA National Observational Cohort Study

■ **Life expectancy** for HIV-infected patients (without AIDS) aged 25 yrs at six months postinfection

Men: an additional 52.7 yrs (versus 53.1 yrs in general population)

Women: an additional 57.8 yrs (versus 58.1 yrs in general population)

Overview

MEPI is a collaborative effort by the U.S. Office of the Global AIDS Coordinator, the National Institutes of Health, and the Health Resources and Services Administration.

Goal: Provide direct support to African institutions to transform medical education in Sub-Saharan Africa, strengthen and build clinical and research capacity and thereby strengthen human resources for health.

Where: 13 Institutions in 12 African Countries

Funding: \$130 million over 5 years

Expected Outcome: An increased quality and quantity of health care workers and faculty are trained and retained in their home countries to practice and conduct research and better respond to the HIV/AIDS epidemic and related co-morbidities.



Overview (continued)

- **Programmatic** (PEPFAR focused): 11 awards
Up to \$2M/yr/award over 5 years
- **Linked** (Other health priorities): 6 awards
Up to \$500K/yr/award over 5 years
Two pilot awards receiving up to \$250K/yr/award
- **Coordinating Center**: 1 award
Provide technical assistance, conduct evaluation and coordinate network activities and communications.

MEPI is a network of 30 regional partners, country health and education ministries, and more than 20 U.S. collaborators



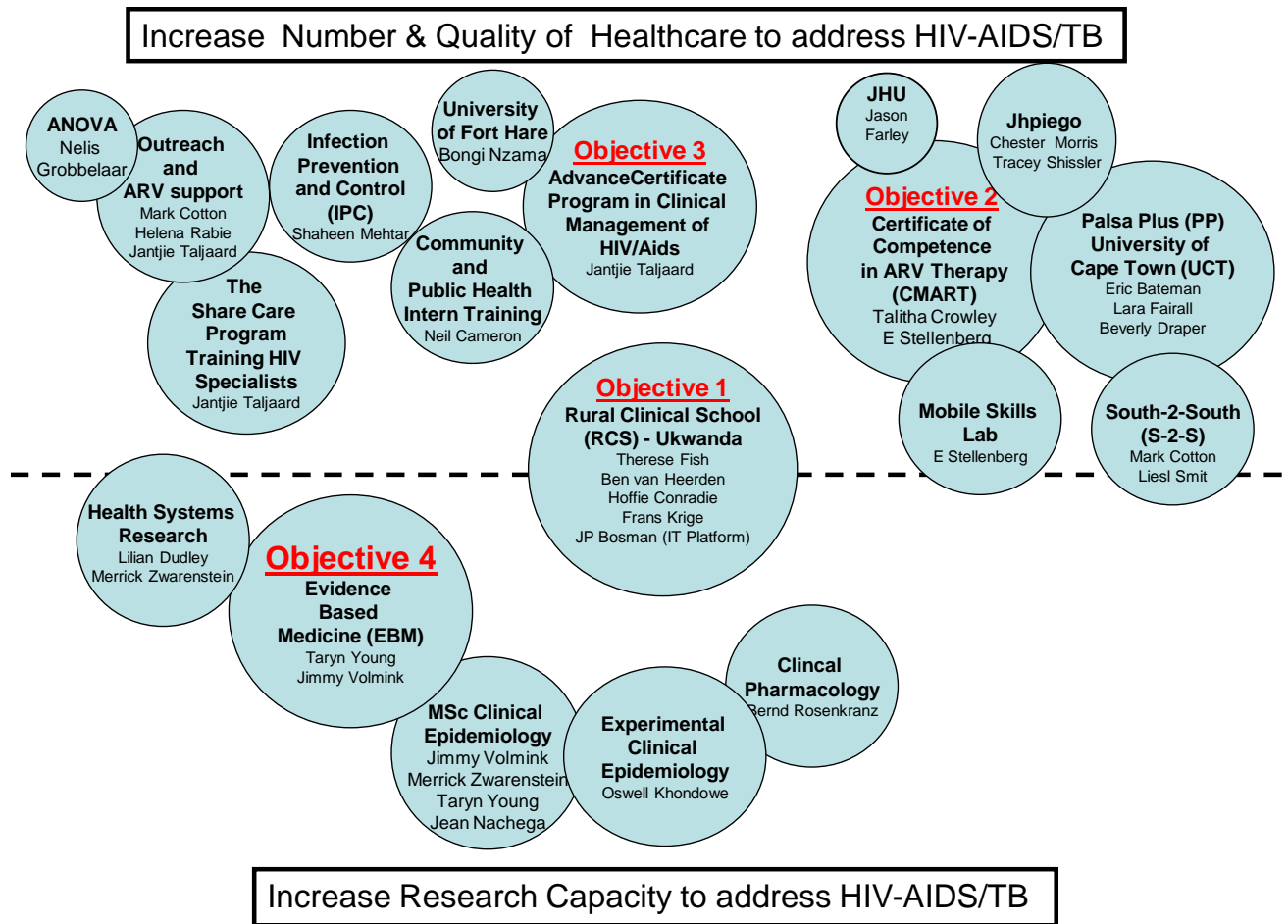
Medical Education Partnership Initiative

Countries

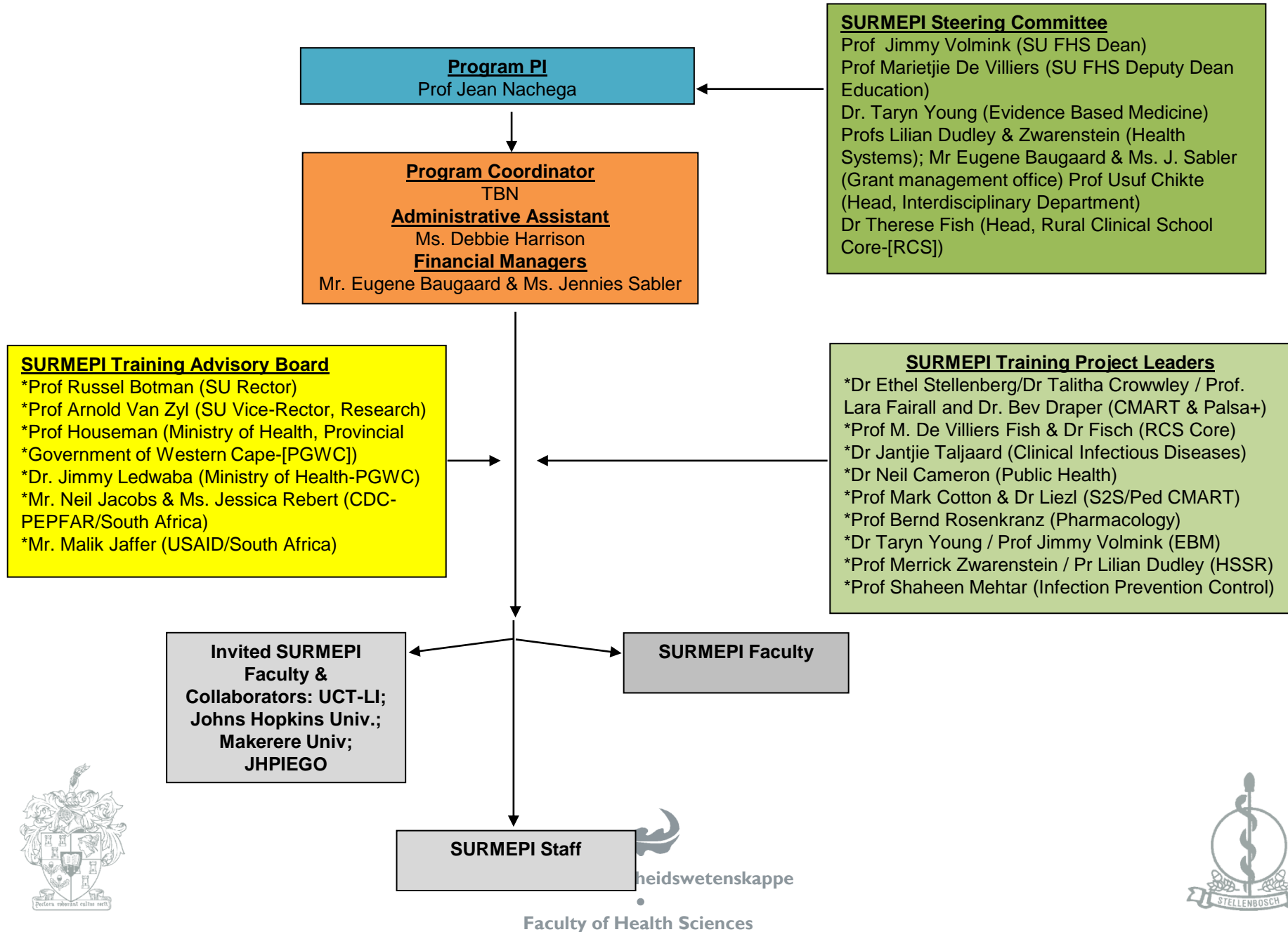
- Botswana- University of Botswana
- Ethiopia- Addis Ababa University
- Ghana- Kwame Nkrumah University of Science and Technology
- Kenya- University of Nairobi
- Malawi- University of Malawi College of Medicine
- Mozambique- Universidade de Eduardo Mondlane
- Nigeria- University of Ibadan
- South Africa- University of KwaZulu-Natal, Stellenbosch University
- Tanzania- Kilimanjaro Christian Medical Centre
- Uganda- Makerere University
- Zambia- University of Zambia
- Zimbabwe- University of Zimbabwe
- Coordinating Centers- George Washington University and African Centre for Global Health and Social Transformation



SURMEPI: Goal & Selected Contributions



SURMEPI Organizational Structure





Fakulteit Gesondheidswetenskappe



Faculty of Health Sciences

